

# BUN PAN RACKS

## Full Size All Welded

ALUMINUM OR STAINLESS  
CONSTRUCTION

Item No. \_\_\_\_\_

Quantity \_\_\_\_\_

Job Name \_\_\_\_\_

Spec No. \_\_\_\_\_

### Applications:

Mobile multi-purpose racks for holding, storing and transporting both plastic and aluminum. 18 X 26 Bun Pans, 18 X 13 Pans, and 17 X 25 Fryer Screens.

### Construction:

**A Series** Heavy duty, high tensile extruded aluminum. Type 6063-T5 alloy. Lifetime guarantee against rust.

**S Series** 18 G Stainless Steel 304 Series

### Tray Slides:

Slides are 1" X 1-1/2" extruded aluminum or S.S. angle heli-arc welded to frame. Bottom load ledge design.

### Frame and Cross Supports:

Vertical and horizontal frame sections are 1" extruded aluminum tubing and 1" solid flat bar extruded aluminum or S.S.

### Casters (A Series):

Platform type 5" diameter, full swivel design. Non-marking polyurethane wheel.

**Casters (S Series):** Stem type 5" diameter.

### Options/Upgrades:

- /011 - Caster Brakes (2), /CC - Card Clip
  - /024 - Corner Bumpers (4), /009 - Pan Stop Aluminum
  - /010 - Pan Stop Stainless, /PG - Pan Stop Gravity
  - /015 - Pan Stop Web-Strap, /PB - Perimeter Bumper
  - /BA - Solid Aluminum Bottom, /008 - "X"Bracing Aluminum
  - /A - Solid Aluminum Top
- Other Options Available**



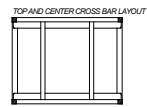
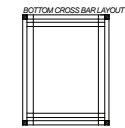
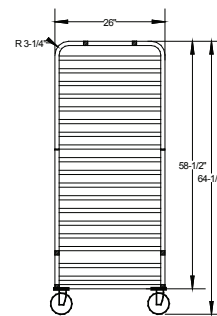
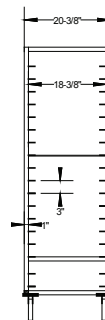
**401A**  
Front Load



**401S**  
Front Load



**411A**  
Side Load



Custom Sizes Available

ALUMINUM		STAINLESS					
Model	Wt.	Model	Wt.	Spacing/Capacity	H	W	D
400A	45	400S	75	FL 2" / 30 Pans	70 <sup>3</sup> / <sub>4</sub> "	20 <sup>1</sup> / <sub>2</sub> "	26"
401A	38	401S	57	FL 3" / 20 Pans	70 <sup>3</sup> / <sub>4</sub> "	20 <sup>1</sup> / <sub>2</sub> "	26"
402A	32	402S	47	FL 4" / 15 Pans	70 <sup>3</sup> / <sub>4</sub> "	20 <sup>1</sup> / <sub>2</sub> "	26"
403A	30	403S	41	FL 5" / 12 Pans	70 <sup>3</sup> / <sub>4</sub> "	20 <sup>1</sup> / <sub>2</sub> "	26"
404A	28	404S	35	FL 6" / 10 Pans	70 <sup>3</sup> / <sub>4</sub> "	20 <sup>1</sup> / <sub>2</sub> "	26"
405A	43	405S	70	FL 2" / 27 Pans	64"	20 <sup>1</sup> / <sub>2</sub> "	26"
406A	35	406S	53	FL 3" / 18 Pans	64"	20 <sup>1</sup> / <sub>2</sub> "	26"
410A	39	410S	60	SL 2" / 30 Pans	70 <sup>3</sup> / <sub>4</sub> "	28 <sup>1</sup> / <sub>2</sub> "	18"
411A	35	411S	50	SL 3" / 20 Pans	70 <sup>3</sup> / <sub>4</sub> "	28 <sup>1</sup> / <sub>2</sub> "	18"
412A	30	412S	37	SL 4" / 15 Pans	70 <sup>3</sup> / <sub>4</sub> "	28 <sup>1</sup> / <sub>2</sub> "	18"
413A	28	413S	33	SL 5" / 12 Pans	70 <sup>3</sup> / <sub>4</sub> "	28 <sup>1</sup> / <sub>2</sub> "	18"
414A	26	414S	30	SL 6" / 10 Pans	70 <sup>3</sup> / <sub>4</sub> "	28 <sup>1</sup> / <sub>2</sub> "	18"
415A	33	415S	52	SL 2" / 27 Pans	64"	28 <sup>1</sup> / <sub>2</sub> "	18"
416A	28	416S	44	SL 3" / 18 Pans	64"	28 <sup>1</sup> / <sub>2</sub> "	18"



55 Channel Drive • Port Washington, NY 11050-2216  
8891 NW 102nd Street • Medley, FL 33178  
Tel: 516-944-6271 • Fax: 516-944-0625 • Toll Free: 866-712-7283  
www.channelmfg.com • Email: sales@channelmfg.com